

THE BULL & LAST

WELCOME

DEAR GUESTS,

As we celebrate the pub's 300th birthday we are delighted to have restored the building to its original purpose; a Pub & Coaching Inn.

Our rooms are named after historical figures who lived within close proximity to the Bull & Last and have created their own legacy. You might identify in some of the rooms a subtle connection to the individual during your stay.

Located a stones throw from Hampstead Heath. We are an independent pub company and we feel honoured to play our part in our local community.

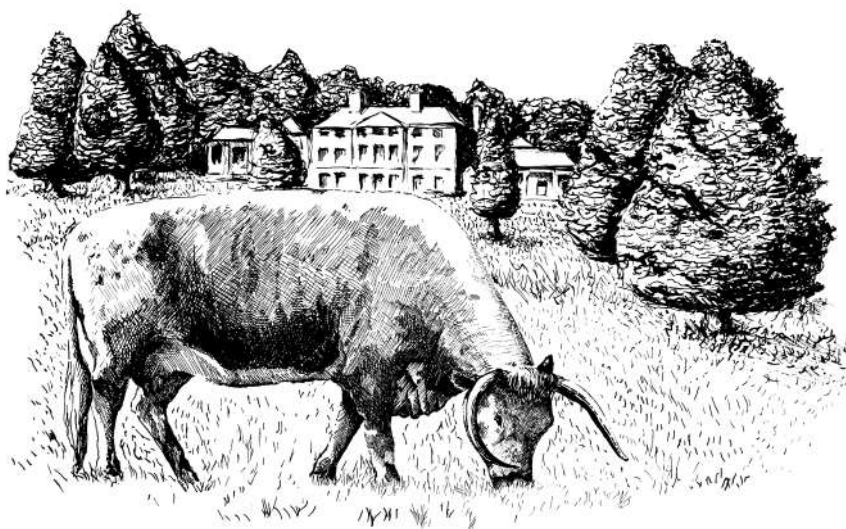
On behalf of the whole team here we hope you have a comfortable and should you need any assistance during your stay please do not hesitate to pick up the phone and give us a call.

Bull & Last Team



CONTENTS

General Info	4
Woodsome	5
History	7
Rooms at the Inn	8
Good to Know	16
Fire Plan	17
NW5 Local Guide	18



PUBS OPENING TIMES & LICENSING

	OPEN	ALCOHOL HOURS	PUB EMPTY
Mon - Thurs	12pm	Midday - 11pm	11.15pm
Fri - Sat	12.30pm	10am - 12pm	12.15am
Sun	12pm	10am - 10.30pm	10.45pm

FOOD SERVICE TIMES

LUNCH	Mon - Fri Sat - Sun	12pm - 3pm 12.30pm - 4pm
DINNER	Mon - Sat Sun	6pm - 10pm 6pm - 9pm

You are able to order from the à la carte menu during service times and eat in your room. Please note there will be a 12.5% service charge added to your food and drink bill and there may be a delay during peak times.

To order room service dial 0 to reach reception



WIFI

Bull and Last Guest

Password - Dexter168

Each of the rooms have our Cookbook on the desk. Please use this as our guestbook and leave a comment on any page

Established in 2020, we created Woodsome to cleanse, hydrate and nourish the skin. Containing natural and organic ingredients and showcasing our fondness for produce present in the culinary world whilst acknowledging our love for the beautiful Hampstead Heath woodlands.

If you are interested in purchasing our products please speak to a member of staff or visit our online shop

HAND CLEANSE £20

An aromatic hand wash with herbaceous culinary ingredients including Orange Rind, Bay Leaf and Thyme stem oils to gently cleanse your hands. Massage into wet hands and rinse thoroughly.

HAND BALM £45

An almond and lavender based moisturising balm to restore and nourish your hands. Enriched with Lemon, Bergamot and plant-based oils to soften your skin. Massage into clean hands to soothe and moisturise

BODY CLEANSE £20

A hydrating blend of Aloe Vera, Sunflower, Mandarin peel and Vetiver essential oils, with tropical botanicals to gently cleanse the skin. Massage over wet skin under the shower and rinse thoroughly.

SHAMPOO £20

A gentle cleansing shampoo containing Sesame oil, Mandarin peel oil and subtle notes of the English woodlands with Lavender essential oil. For everyday use to leave your hair clean and refreshed. Pour a small amount of shampoo into your hands, massage gently onto the scalp then rinse thoroughly.

CONDITIONER £20

A creamy conditioner enriched with Sesame and Coconut oils, and an aromatic blend of Mandarin, Patchouli and Clary Sage to nourish, hydrate and enhance hair well-being. After shampooing, squeeze out any excess water and massage a small amount gently onto the ends. Leave on for a few minutes then rinse thoroughly.

TUB SOAK £20

A soothing indulgent bath soak to rejuvenate oneself with a creative blend of Ylang Ylang, Bergamot and other aromatic botanicals to relax the whole body. Pour directly into a running bath to release the botanical aromas.

* The products in the rooms are to be used whilst on site only.
Items missing on departure will be charged



HISTORY

In 2008 we first took the keys to the Bull & Last and moved into the flat above the pub - now converted into our guest rooms.

We had a wonderful decade of trading before finally refurbishing our old living quarters and returning the pub to it's former glory as a coaching inn.

A little more subtle than the décor in the pub and dining room but no less meticulously planned and executed. Combining comfort and design alongside thoughtful and personal touches to give the perfect city break away from the hustle of central London whilst being only 20 minutes away from Soho.



ECO-FRIENDLY

We work alongside companies which take into account the impact their trade has on the environment. Our bed manufacturer is the UK's first carbon neutral operator and committed to global sustainability through being 100% recyclable. Our bespoke product range has been created with natural plant-based ingredients, is cruelty free and eco friendly. Our coffee capsules from Volcano Coffee Works are 100% compostable and Vegan friendly.

Each room boasts styled interiors with complementary facilities

- King Size Bed
- Lefroy Brooks En-suite
- Wi-fi
- Filtered Water
- Roberts Radio
- Work of Local Artists
- Parquet flooring
- Georgian Shutters
- Pin Lock Drawer Safe
- Independent Producer Mini Bar
- Air-conditioning
- Tranquil Wool Mattress Cover
- LG TV
- Nespresso machine & Volcano Coffee Brixton
- Tea Drop
- Woodsome Skin Care Range

GOTTO

Room size including en suite 11 m²

Named in honour of Henry Gotto, the great proprietor of the Bull & Last who rebuilt the building after a fire in 1883. Our smallest room hosts a standard double bed yet boasts a generous en-suite.

Despite its size, Gotto still benefits from most of the amenities in our king rooms. Whilst the proportions do not allow for a desk, the room benefits from an abundance of natural light.



ELLIS

Room size including en suite 12.4 m²

Named after Ruth Ellis (1926 – 1955), she was the last woman to be executed in Britain after being convicted of the murder of her lover, racing car driver David Blakely. From a humble Welsh background, Ellis was drawn into the world of London nightclub hostessing, which led to a chaotic series of brief relationships.

On Easter Sunday April 10th 1955, Ellis shot Blakely dead when he walked out of The Magdala public house in Hampstead, and surrendered herself immediately to the police.

This snug and cosy room is painted in Hague blue. Showcasing art from local artist Dacre Punt who exhibited his collection here many years ago. The quirky en suite bathroom features thick white Claybrook tiles and a Crittal window to maintain an airy yet contemporary feel to this charming room.



KEATS

Room size including en suite 14m²

This room is named after English Romantic poet John Keats (1795 – 1821). He is one of the principal figures of the Romantic movement, despite his works having been in publication for only a short time before his death at the age of 25. Many of our guests over the years have been to visit his place of residence and on route have popped in for a pint to firm up directions.

Inspired by his loyalty to the Heath, the oak turned wall lights pay homage to the great man. Soft furnishings such as velvet headboards, teal cushions and a warm woollen throw encourage a spot of reading and relaxation. In the bathroom the Campinola mint tiles offer a deep warmth which is offset against the pale powder colour of the bedroom - keeping it light, airy and classic.



SOMERSET

Room size including en suite 16.6m²

Lady Isabella Caroline Somerset (Lady Henry Somerset, 1851 – 1921) was a British philanthropist, campaigner for women's rights and social reform, and a temperance leader. She devoted her life to the temperance mission, social welfare, and the Colony for Women Inebriates, which she opened in 1895.

The en suite is decorated with a deep colour, the Jade Campinola thick tile handmade in Italy compliments the Kingfisher velvet fabric headboard in a timeless elegant British manner. Streams of natural light pour through two large period windows, whilst keen art lovers appreciate the butterfly artwork from the wonderful Les Couilles di Chien.



DIDO

Room size including en suite 18.3m²

Dido Elizabeth Belle (1761 – 1804) was the illegitimate daughter of Maria Belle, an African woman in the British West Indies, thought to be a slave, and Sir John Lindsay, an officer of the British Royal Navy who was stationed there. Lindsay took Dido with him when he returned to England in 1765, entrusting her care to his uncle William Murray, 1st Earl of Mansfield, and his wife Elizabeth Murray, who had no children of their own.

The Murrays educated and raised Dido, together with their niece, Lady Elizabeth Murray (whose mother had died), bringing up Dido as a lady rather than a slave, though her exact position in the household remains unclear.

One of our larger rooms, 'Dido' in tribute to Dido Belle, keeps the original fireplace in honour of the historic fireplaces of Kenwood House. Whilst growing up she would have seen Longhorn cattle grazing the Heath, hence the artwork on show from James Nunn. The colour schemes in the room are based on the portrait work of David Martin.



MANSFIELD

20.2m²
(sloping ceiling in some areas)

William Murray, 1st Earl of Mansfield (1705 – 1793) was an eminent British barrister, politician and judge, noted for his reform of English law. As Lord Chief Justice, arguably the most powerful British jurist of the century, his rulings reflected the Age of Enlightenment and he moved England on the road to the abolition of slavery and the slave trade.

The Earl of Mansfield was a staunch protector of the Heath, opposing development across all corners of the park. In his honour 'Mansfield' has been decorated in Green Smoke and extensively furnished with plants. The free-standing bath from Catchpole & Rye is a twist on the iconic Bath House and the en suite decorated in marble which was used heavily throughout Kenwood House. Spacious, thoughtful and decadent for the perfect night away.



FARADAY

26.1m²
(sloping ceiling in some areas)

Michael Faraday (1791 - 1867) was a self-educated English physicist, chemist and inventor who pioneered electromagnetism and electrochemistry. His key discoveries include the principles underlying electro-magnetic induction, diamagnetism and electrolysis, and he helped popularise science through a series of public lectures. Faraday was also interested in the dissenters' (non-Anglican) section of Highgate cemetery.

In a nod to Michael Faraday's ground breaking work in electro magnetics, we chose a bespoke Catchpole & Rye free-standing copper bath. Hanging nearby, an antique print of the pub from the same era alongside some rare pieces of taxidermy. The Lefroy Brooks shower benefits from natural light shining through the rooflights in the well-proportioned and bright bathroom. A large and elegant room with plenty of space to unwind and relax.



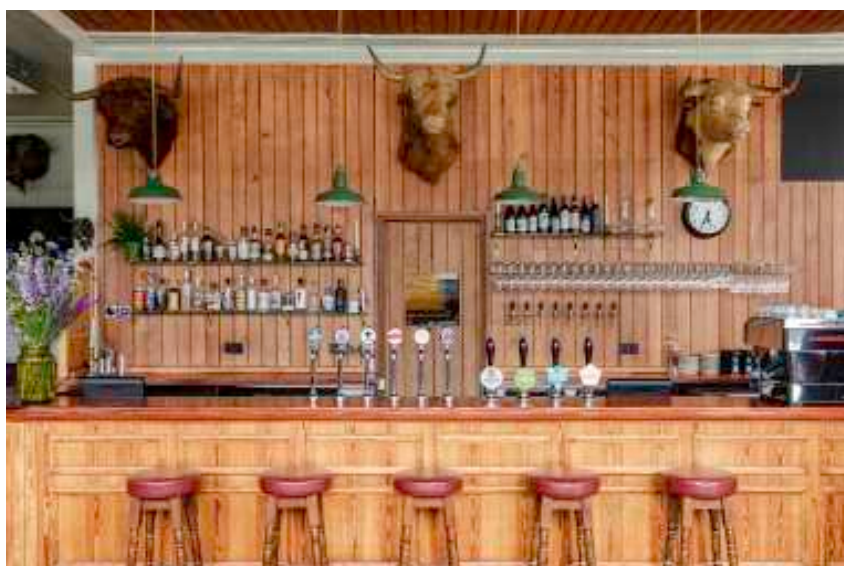
ROOM KEYCARD

On arrival you will be given your room keycard and briefed on how this works. Outside of pub opening hours you will use the side entrance of Woodsome Road to regain access to the pub.

LUNCH & DINNER

We recommend that a reservation be placed for lunch or dinner, especially during busy periods and in particular at the weekends. We cannot guarantee availability so please advise as soon as possible upon arrival. Dining reservations may also be placed online: www.thebullandlast.co.uk

For further information please refer to your confirmation email with the Inn Rules.



Duty Manager is on site for arrivals during the day and up to midnight. There will be no manager on site (apart from cleaning staff 7am to 9am) between 1am and 9am.

Staff emergency key contact numbers are next to fire alarm panel near the side entrance should any assistance be required during this time.

In the case of the fire alarm going off within these hours please see the Evacuation Plan map in your room and Fire Action plan.

FIRE / EMERGENCY EXITS

The hotel fire exit is the out of hours side entrance. You will need your card on re-entering the premises. Fire Safety – Every Tuesday at 11am the Fire Alarm is tested, this is just a routine check.

The roof-light on the top of stairs is not a fire exit and is prohibited. It will open on the sound of the alarm but you must follow the exit signs down to the Ground level.

Emergency Numbers:

Hannah 07572 789720
Joe 07977 213571
Alan 07496529841
Federico 07503086176
Ollie 07814 458318



INWYS

A word from the Locals

We do hope you explore NW5 and all it has to offer.
We feel hugely privileged to run this Gastropub in such beautiful surroundings.

PACKING TIPS

- Suitcase 270mm Height (slots under bed)
- Swimming attire in the summer
- Good walking boots or wellies in the winter
- Sports Wear (jogging around the Heath is bliss)
- Pre-book Tote Bag Hamper
- Check Parking in T & Cs as it is very reasonable



LIDO

Built in 1938 and refurbished in 2005, the Grade II-listed Parliament Hill Lido measures a generous 60 metres by 28 metres. It has a stainless steel pool liner (the only one in an outdoor pool in the UK) which gives the water a metallic shimmer – not that you’ll be able to tell when it’s packed full of people on a sunny day. The lido is unheated, but wetsuits are permitted at the lifeguard’s discretion. There are two sessions a day (7am – 9am and 10am – 6pm) with an additional adults-only evening session on Mondays, Thursdays and Fridays. There is a paddling pool for under-fives and a café.

TENNIS & PETANQUE

We have four rackets to hire free of charge and balls. There are lots of courts in the surrounding area. Its £9 an hour per adult. {clubspark.lta.org.uk}

The Petanque set is free of charge to use, please ask the management team.

WILD SWIMMING

Please check the information online regarding T & Cs. But it is all very simple. There are three bathing ponds available ladies, men’s and mixed. People come from all over for the experience so please be ready for a busy day if the sun is out! {hampsteadheath.net}



BROMPTON BIKES

We have Brompton Bikes for hire for £25. With this we supply a bike lock & helmet. This is a folding bike and therefore allows you take it on London Transport. Please see which parks etc you are allowed to cycle in but this is great way to explore London.

KENWOOD HOUSE

A must visit and wonderful 6km walk through the Heath. Steep hills on the way there but you are rewarded with beautiful woodland and a down hill route on the return leg.

GOLDERS PARK DEER PARK ENCLOSURE

A cute compact Animal Park located at the North East part of Golders Hill-Hampstead Heath Extension. The beautiful pergola, exotic wildlife and ponds are a hidden gem.

HIGHGATE CEMETERY

Highgate Cemetery is a popular place to visit, owing to its status as a nature reserve. The grounds are full of wild flowers and trees and is home to birds and small animals. The tombs, mausoleums and memorials are beautiful in their own right and in a perpetually crowded and busy City, it's a rare place of silence.



CAMDEN MARKET & CANAL

Have a stroll down to Camden lock and see all the amazing, wonderful cuisines on offer at the street food stalls. If that's a bit manic a short walk from here is Primrose Hill where not only is there a stunning view of London, there are a number of boutique shops to visit. This is also the entrance to London Zoo which is a fantastic day out.

FARMERS MARKET

This takes place every Saturday 10am – 2pm at William Ellis School which is opposite the pub. Regulars make a bee line for their favourite stalls including Eden Farms organic veg, Five Ways Fruit Farm for asparagus and soft fruit, Levain Bakery for brilliant sour dough bread, The Potato Shop for their range of spuds, and Brambletye for biodynamic eggs, juice, fruit and veg. There is free range poultry from Fosse, organic meat from Galileo Farm, Wild Country Organics range of salad leaves, hot food from Mumbai Mix, Pasta E Basta and much more.

PARLIAMENT HILL WALK

Its quite a steep hill but once you're up there you get a breathtaking view of London. You then can walk into Hampstead and have a stroll around the shops. Ginger & White is worth a flat white if your flagging or a pint at the Holly Bush!



BULL & LAST HAMPER (SPRING & SUMMER ONLY)

LOCAL INDEPENDENT TOURS

We are lucky enough to work alongside such passionate and talented local suppliers. Now producers are often seen giving the opportunity to the public to see what happens on site. Brewery and distillery tours can be organised with sufficient notice. If thats too much to organise have a proper pint at the Southampton Arms a stones throw away- we might see you in there.

LOCAL SHOPS

Swains Lane and Fortress Road are all in close proximity to the pub.



